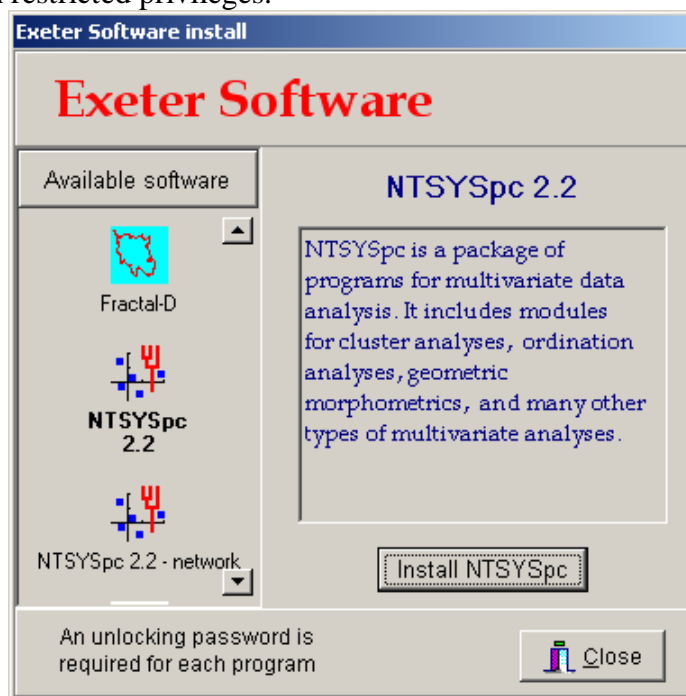


Step-by-step guide to the installation of NTSYSpc

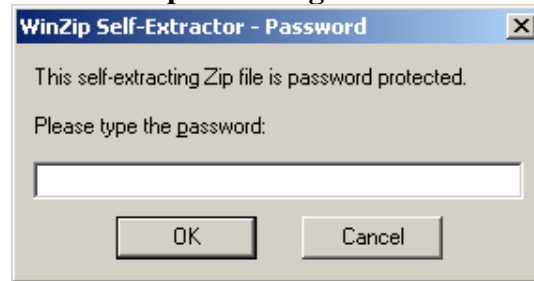
1. Note that two versions of NTSYSpc are available. The 'network' version is intended for student labs with networked computers that are typically quite restricted in the operations that students are allowed to perform. The regular version writes a ntsys.ini file to the ntsys directory in the user's 'My Documents' directory. If that is a problem then try the network version.
2. If installing from Exeter's CD, the setup program should load automatically and display the following dialog.



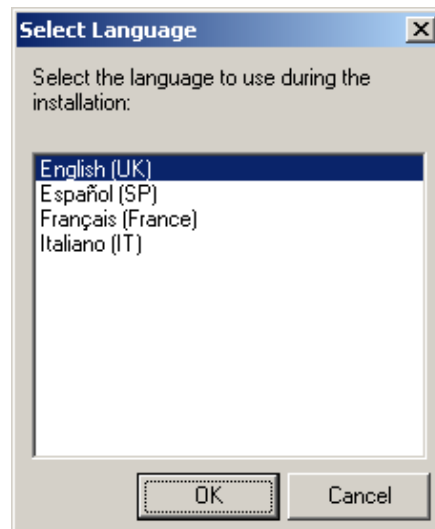
3. Scroll down to the two icons for NTSYSpc. One will normally wish to select the first icon. The second is for computers with restricted privileges.



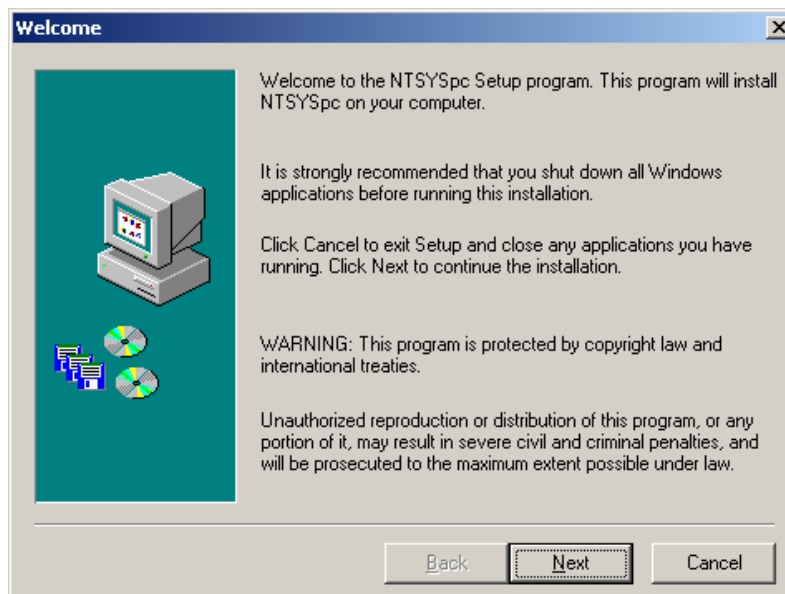
4. Then click the “Install NTSYSpc” button. A window will then open asking for the password (unlocking code) for NTSYSpc. Enter the 16 character hex code and click the OK button. **If installing from a downloaded file, then the installation process begins here.**

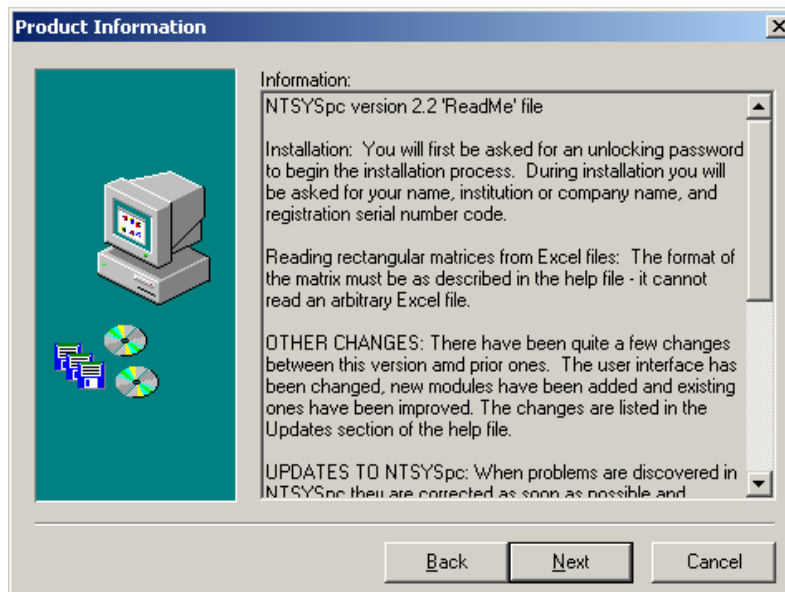
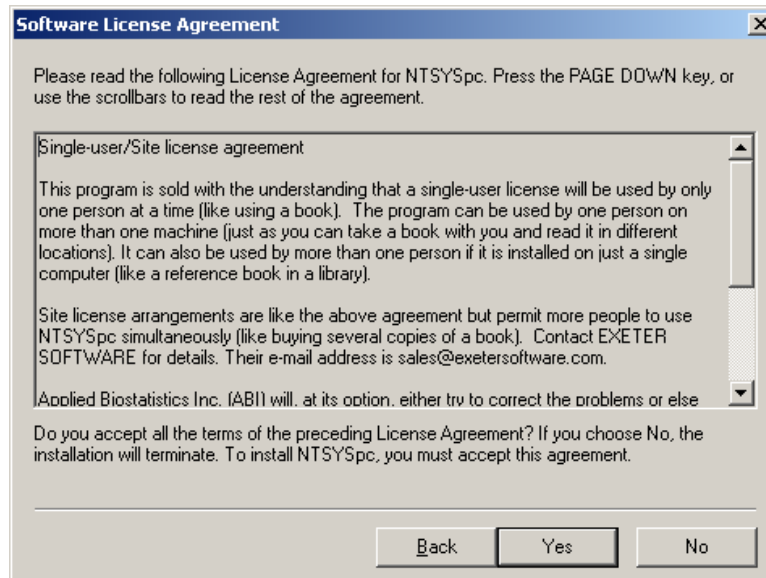


5. A dialog will then ask for a choice of installation language. Note the NTSYSpc software will still use just English.

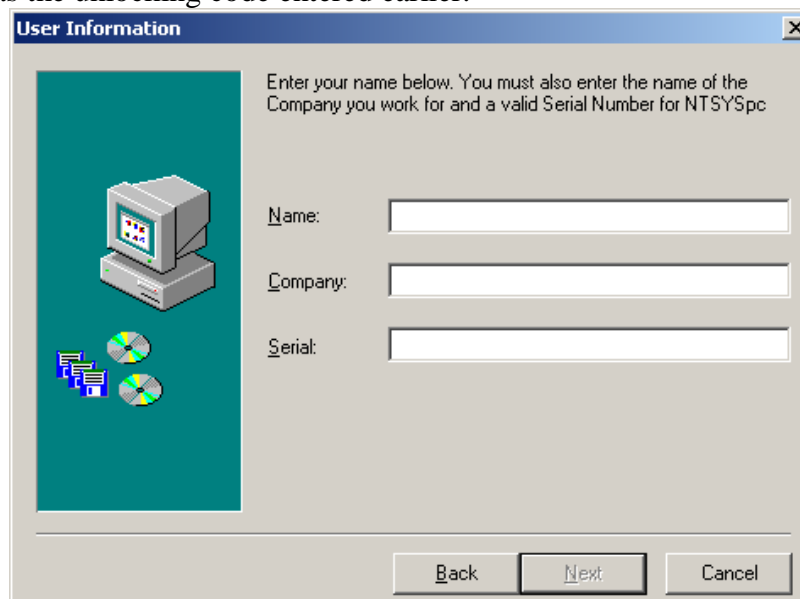


6. The program will then display a sequence of windows (a Welcome screen, license agreement, and read me file).

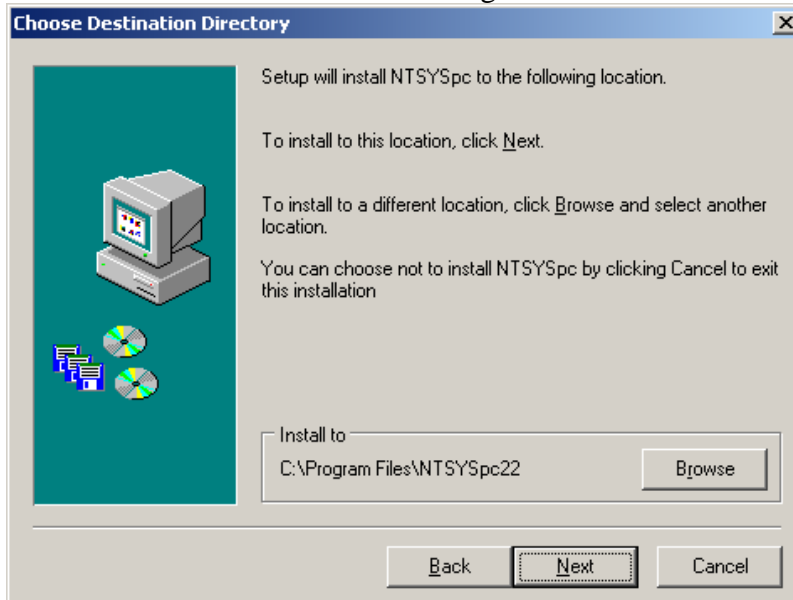




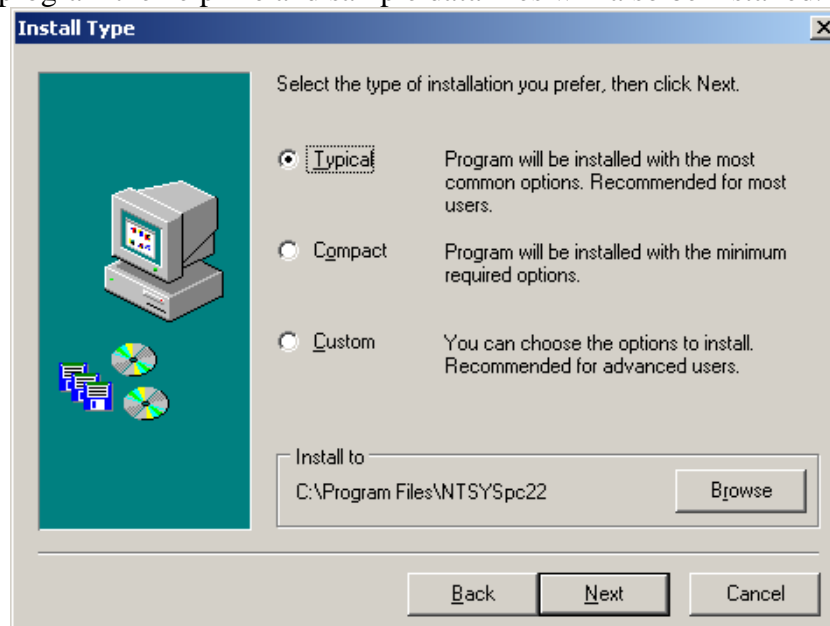
7. The install program will then request your name, institution, and the registration s/n code. Note that this is **not** the same as the unlocking code entered earlier.



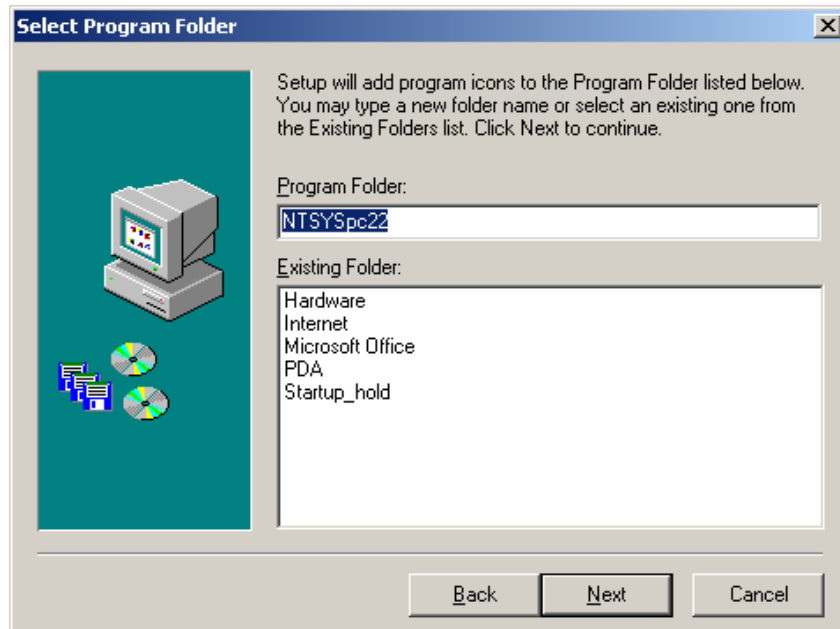
8. Next, the program will ask where NTSYSpc should be installed. The default should usually be a reasonable choice. Click on the Browse button to change the location.



9. Next, select the type of installation. The “Typical” choice should almost always be used so that in addition to the program the help file and sample data files will also be installed.



10. Next the program will ask for the folder name to be used in the Start Menu. When the “Next” button is clicked the program will begin copying the files to your hard disk. When finished you can select to begin using NTSYSpc.



11. The Getting Started Guide shows a step by step example of a typical application. The help file contains several other such examples. The help file is quite extensive and should answer most questions about what the various computational modules do. Note that free minor updates (service releases) are often made available on Exeter's website. It should be checked from time to time as new features are added and bugs are fixed. As user questions arise the help file is also modified.

We hope you find the program useful!